



Decarbonisation of buildings made easy

VRV 5 Heat Recovery

① Sustainable |

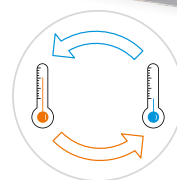
Significantly reduces the CO₂ footprint of your building

- "Free" heat through **efficient 3-pipe heat recovery**, transferring heat from areas requiring cooling to areas requiring heating and vice versa
- Reduced indirect impact thanks to **high seasonal efficiency**
 - η_{s,c} up to **298.3%**, measured with most popular units
 - Reduces running costs compared to traditional systems
- Reduced direct impact thanks to **lower GWP R-32 refrigerant**
 - Up to 71% Global Warming Potential reduction compared to R-410A
 - Single component refrigerant, easy to recover and reuse
 - F-Gas inspections reduced to just one annual visit


② Flexible |


Heat pump technology to fit any commercial building

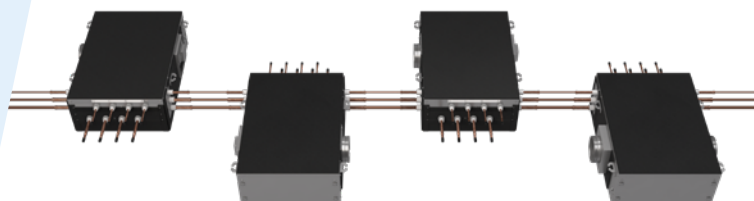
- Unmatched outdoor unit **capacity up to 90kW** in heating (28 HP)
- **Extensive piping** lengths and heights to meet any VRV application
- **Quiet operation** via 5 low sound steps, bringing sound pressure down to **40 dB(A)**
- **Simultaneous cooling & heating** for maximum comfort
- **Completely redesigned BS boxes** for faster installation and easier servicing



"Free" heating through heat recovery

 22.4 kW ~ 78.5 kW

 25.0 kW ~ 87.5 kW



BSSV box: Faster installation and easier servicing

③ Unique Shîrudo Technology | Provides peace of mind

- Suitable for any room size: Shîrudo Technology enables the easy installation of R-32 VRV in any room
- Maximum installation flexibility, thanks to **factory-provided refrigerant control measures**
- No need for complex studies or field supplied equipment
- **Third certification** according to the product standard IEC60335-2-40



Find out more
about refrigerant safety standards
and Shîrudo Technology

④ Support | Wide network of experts with specialised advice

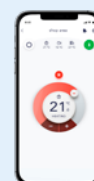
- Maximise BREAAM/LEED score
 - Extra credit thanks to lower GWP of R-32
 - Our accredited professionals assist to optimise the design

Our online support software, featuring a visual floorplan interface, simplifies design while ensuring compliance with product standards

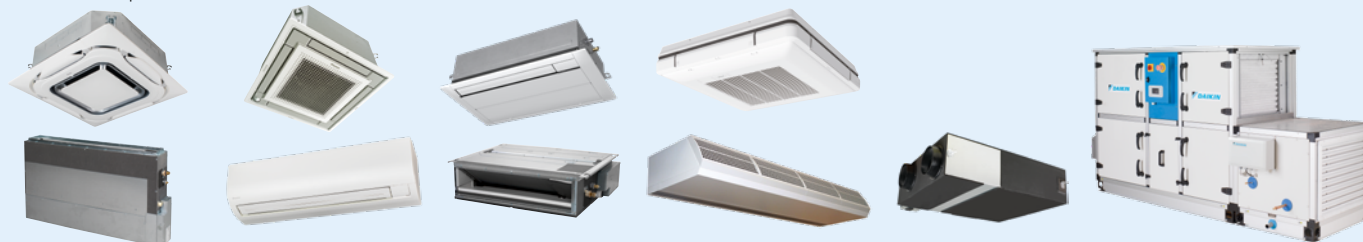


⑤ Widest R-32 portfolio | Match any application

- Widest range of **specifically designed** indoor units and air curtains: 11 unit models in 96 variations
- Plug & play **ventilation solutions** from 150 up to 140.000 m³/h
- Extensive range of **intuitive controllers**:
 - Individual or centralised
 - On-premises or in the Cloud



..... Controllers



..... Indoor Ventilation

| Specifications | | Module | | Single Units | | | | | | | Multi combinations (continuous heating) | | | | | | | | | |
|-------------------------|----------------------------------|------------------------------------|-------------------|--------------|--------------|-----------------------------|-----------------------------|-----------------------------|--------------|--------------|---|-----------------------------|-----------------------------|--------------|-----------------------------|--|-----------------------------|-----------------------------|--|--|
| | | REMA5A9 | REYA8A9 | REYA10A9 | REYA12A9 | REYA14A9 | REYA16A9 | REYA18A9 | REYA20A9 | REYA10A9 | REYA13A9 | REYA16A9 | REYA18A9 | REYA20A9 | REYA22A9 | REYA24A9 | REYA26A9 | REYA28A9 | | |
| System | Outdoor unit 1 Outdoor unit 2 | | | | | | | | | REMA5A9 | | | REYA8A9 | | REYA10A9 | REYA8A9 | | REYA12A9 | | |
| Capacity range | HP | 5 | 8 | 10 | 12 | 14 | 16 | 18 | 20 | REMA5A9 | | | REYA8A9 | | REYA10A9 | REYA8A9 | | REYA12A9 | | |
| Cooling capacity | Prated,c | kW | | 22.4 | 28.0 | 33.5 | 40.0 | 45.0 | 56.0 | 28.0 | 36.4 | 44.8 | 50.4 | 55.9 | 61.5 | 67.4 | 73.5 | 78.5 | | |
| Heating capacity | Prated, h | kW | | 22.4 | 28.0 | 33.5 | 40.0 | 45.0 | 56.0 | 28.0 | 36.4 | 44.8 | 50.4 | 55.9 | 61.5 | 67.4 | 73.5 | 78.5 | | |
| | Max. | kW | | 25.0 | 31.5 | 37.5 | 45.0 | 50.0 | 56.5 | 32.0 | 41.0 | 50 | 56.5 | 62.5 | 69.0 | 75.0 | 82.5 | 87.5 | | |
| Recommended combination | | Only for use in multi combinations | 6FVFAS0A2VEB | 6FVFAG0A2VEB | 6FVFAS0A2VEB | 6FVFAS0A2VEB + 5FVFAG0A2VEB | 6FVFAS0A2VEB + 5FVFAG0A2VEB | 6FVFAS0A2VEB + 5FVFAG0A2VEB | 6FVFAS0A2VEB | 6FVFAS0A2VEB | 6FVFAS0A2VEB + 3FVFAG0A2VEB | 6FVFAS0A2VEB + 3FVFAG0A2VEB | 6FVFAS0A2VEB + 4FVFAG0A2VEB | 6FVFAS0A2VEB | 6FVFAS0A2VEB + 4FVFAG0A2VEB | 6FVFAS0A2VEB + 4FVFAG0A2VEB + 2FVFAG0A2VEB | 6FVFAS0A2VEB + 5FVFAG0A2VEB | 6FVFAS0A2VEB + 6FVFAG0A2VEB | | |
| SEER | | | 7.35 | 7.14 | 7.21 | 7.73 | 7.10 | 7.09 | 6.63 | 7.62 | 7.49 | 7.40 | 7.26 | 7.27 | 7.17 | 7.16 | 7.48 | 7.15 | | |
| SCOP | | | 4.11 | 4.33 | 4.49 | 4.28 | 4.26 | 4.39 | 4.14 | 4.09 | 4.11 | 4.35 | 4.34 | 4.38 | 4.41 | 4.20 | 4.38 | 4.36 | | |
| ηs,c | % | | 290.8% | 282.6% | 285.3% | 306.1% | 281.0% | 280.6% | 262.2% | 301.9% | 296.5% | 293.0% | 287.5% | 287.6% | 283.6% | 283.4% | 296.2% | 282.8% | | |
| ηs,h | % | | 161.5% | 170.2% | 176.4% | 168.3% | 167.5% | 172.5% | 162.7% | 160.6% | 161.5% | 170.9% | 170.5% | 172.2% | 173.3% | 165.2% | 172.0% | 171.5% | | |
| Dimensions | HxWxD | mm | 1,685x930x765 | | | | 1,685x1,240x765 | | | | | | | | | | | | | |
| Weight | | kg | 213 | | | | 296 | | | | 319 | | | | | | | | | |
| Sound power level | Cooling | dB(A) | 78.3 | 78.8 | 82.5 | 78.7 | 83.7 | 83.4 | 87.9 | 81.3 | | | 81.6 | 83.9 | 84.0 | 84.8 | 84.0 | 86.2 | | |
| | Heating | dB(A) | | | | | | | | | 82.4 | | | 83.1 | 84.8 | 85.2 | 87.1 | 88.1 | | |
| Sound pressure level | Cooling | dB(A) | 56.3 | 58.0 | 60.8 | 58.1 | 61.4 | 63.0 | 67.0 | 59.3 | | | 60.2 | 62.1 | 62.6 | 62.6 | 62.7 | 64.1 | | |
| Operation range | Cool./Heat. Min/Max °C °DB/°CWB | | -5 ~ 46/ -20 ~ 16 | | | | | | | | | | | | | | | | | |
| Refrigerant | Type/GWP | | R-32 / 675.0 | | | | | | | | | | | | | | | | | |
| | Charge | tCO2eq/kg | 9.00/6.08 | | | | 10.6/7.16 | | | | - | | | | | | | | | |
| Piping | Liquid OD | mm | 9.52 | | | | 12.7 | | | | 9.52 | | 12.7 | | | | 15.9 | | | |
| connections | Gas OD | mm | 19.1 | | | | 22.2 | | | | 19.1 | | 22.2 | | | | 28.6 | | | |
| | H/P/LP gas OD | mm | 15.9 | | | | 19.1 | | | | 22.2 | | 19.1 | | | | 22.2 | | | |
| | Tot.pip.length Sys.actual | m | | | | | 1,000 | | | | 500 | | | | 1,000 | | | | | |
| Power supply | Phase/Freq./ Voltage | Hz/V | 3N~/50/380-415 | | | | | | | | | | | | | | | | | |
| Current - 50Hz | Max fuse amps (MFA) | A | 20 | 25 | 32 | 40 | 50 | 40 | 50 | 40 | 50 | 40 | 50 | 40 | 50 | 40 | 50 | 63 | | |

Access all technical details here



Daikin Europe N.V. Naamloze Venootschap Zandvoordestraat 300 · 8400 Oostende · Belgium · www.daikin.eu · BE 0412 120 336 · RPR Oostende (Publisher)



Daikin Europe N.V. participates in the Eurovent Certified Performance programme for Liquid Chilling Packages and Hydronic Heat Pumps, Fan Coil Units and Variable Refrigerant Flow systems. Check ongoing validity of certificate:
www.eurovent-certification.com

ECPEN25-232

05/2025

The present publication is drawn up by way of information only and does not constitute an offer binding upon Daikin Europe N.V. Daikin Europe N.V. has compiled the content of this publication to the best of its knowledge. No express or implied warranty is given for the completeness, accuracy, reliability or fitness for particular purpose of its content and the products and services presented therein. Specifications are subject to change without prior notice. Daikin Europe N.V. explicitly rejects any liability for any direct or indirect damage, in the broadest sense, arising from or related to the use and/or interpretation of this publication. All content is copyrighted by Daikin Europe N.V.